

**High pressure filter housings designed for the purification of compressed air and gases.**

Donaldson® HD high pressure filter housings are designed for the purification of compressed air and gases in industrial operations. The housings offer low differential pressure at high flow rates. A wide variety of filter elements are available to meet a broad range of application requirements.

HD housings are available in eight different sizes, ranging from 1/4" to 2" FNPT, and pressure rating 925 psig and 5,800 psig. The HD High Pressure Filter Housings are designed in accordance to ASME VIII, Division 1. Housings are available in aluminum, stainless steel, and carbon steel.



**HD High Pressure Filter Housings**

**SPECIFICATIONS**

MATERIALS	
Filter Housings	925 psig: Aluminum (304 SS optional) 5,800 psig: Carbon steel (316 SS optional)
Sealing	O-ring, parting compound free, made of Perbunan®*
SURFACE FINISH	
	925 psig: Aluminum anodized
	5,800 psig: Carbon steel nickel plated

CONNECTION
1/4" to 2" FNPT
MINIMUM/MAXIMUM OPERATING TEMPERATURE
+ 14°F/+176°F

\* Perbunan® is a registered trademark of LANXESS Deutschland GmbH UFSB0151.

## DIMENSIONS & SPECIFICATIONS

### 925 PSIG (ALUMINUM)

Model Number	Capacity (scfm)	Connection (FNPT) (C)	Element Size	Dimensions (inches)				Mounting Holes		Weight (lbs) w/o Element
				Height (A)	Width (B)	Conn. Height (D)	Clearance (E)	Spacing (F)	Screw Type (G)	
HD0003	144	1/4"	0305	6.5	3.5	5.7	5.1	2.0	4xM8	3.5
HD0006	288	3/8"	0310	6.5	3.5	5.7	5.1	2.0	4xM8	3.5
HD0012	576	1/2"	0420	8.1	4.2	7.3	7.5	2.0	4xM8	5.7
HD0018	864	3/4"	0520	9.1	4.2	8.1	7.5	2.0	4xM8	6.2
HD0027	1,296	1"	0525	9.3	4.7	8.3	7.5	2.8	4xM10	9.5
HD0036	1,728	1-1/4"	0725	11.5	4.7	10.1	10.0	2.8	4xM10	10.1
HD0048	2,304	1-1/2"	0730	12.4	6.0	11.0	10.0	3.2	4xM10	16.3
HD0072	3,456	2"	1030	16.0	7.3	14.4	14.0	4.3	4xM12	41.7

### 5,800 PSIG (CARBON STEEL)

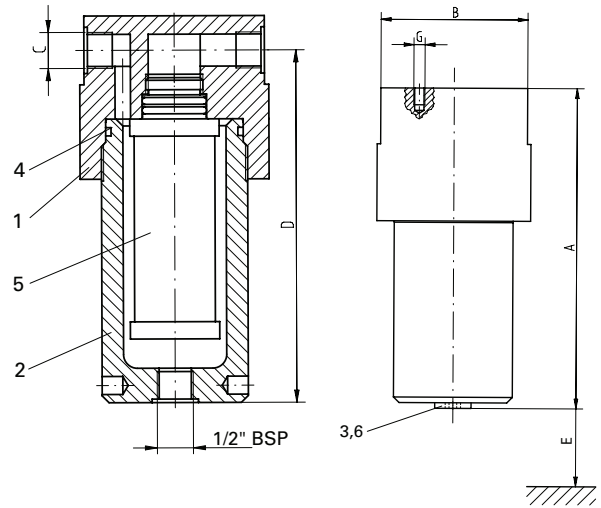
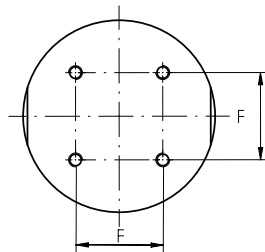
Model Number	Capacity (scfm)	Connection (FNPT) (C)	Element Size	Dimensions (inches)				Mounting Holes		Weight (lbs) w/o Element
				Height (A)	Width (B)	Conn. Height (D)	Clearance (E)	Spacing (F)	Screw Type (G)	
HD0003	900	1/4"	0305	6.7	3.5	5.9	5.1	2.0	4xM8	11.0
HD0006	1,800	3/8"	0310	6.7	3.5	5.9	5.1	2.0	4xM8	11.5
HD0012	3,600	1/2"	0420	8.3	4.2	7.5	7.5	2.0	4xM8	19.9
HD0018	5,400	3/4"	0520	9.3	4.2	8.5	7.5	2.0	4xM8	20.9
HD0027	8,100	1"	0525	10.0	4.7	8.7	7.5	2.8	4xM10	32.0
HD0036	10,800	1-1/4"	0725	12.0	4.7	10.7	10.0	2.8	4xM10	35.3
HD0048	14,400	1-1/2"	0730	13.0	6.0	11.7	10.0	3.2	4xM10	60.6
HD0072	21,600	2"	1030	16.6	7.5	15.0	13.5	4.3	4xM12	132.3

### CAPACITY CORRECTION FACTORS

925 PSIG										
Operating Pressure (psig)	500	550	600	650	700	750	800	850	900	925
Correction Factor	0.55	0.6	0.65	0.71	0.76	0.81	0.87	0.92	0.97	1.00
5,800 PSIG										
Operating Pressure (psig)	1000	1500	2000	2500	3000	3500	4000	4500	5000	5800
Correction Factor	0.17	0.26	0.35	0.43	0.52	0.6	0.69	0.78	0.86	1.00

1 Capacities are general recommendations and may vary based on element selection, operating conditions, and allowable pressure losses. To determine capacity at other operating pressures, multiply published capacity value by the correction factor.

No.	Description
1	Upper Housing Bowl
2	Lower Housing Bowl
3	Screw Plug
4	Housing O-ring
5	Filter Element
6	Sealing



Donaldson Company, Inc.  
 Compressed Air and Process Filtration  
 PO Box 1299  
 Minneapolis, MN  
 55440-1299 U.S.A.

Tel 800-543-3634 (USA)  
 Tel 800-343-3639 (within Mexico)  
 Fax 952-885-4791  
 compressedair@donaldson.com  
 donaldsonprocessfilters.com



**HD High Pressure Filter Housings (07/14)**

© 2009 Donaldson Co., Inc. All Rights Reserved. Information in the document is subject to change without notice.  
 {Contains Donaldson proprietary technology.}