



Donaldson®
FILTRATION SOLUTIONS



The new Filter Media Synteq XP

The Revolution in Filtration Technology

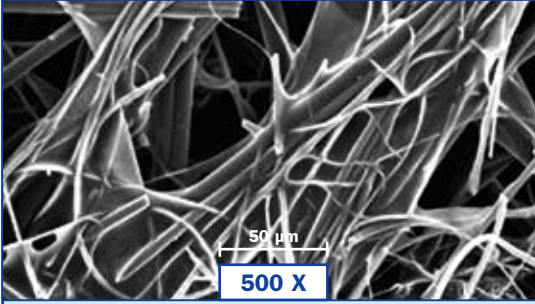
Synteq XP: a new Benchmark for Compressed Air Filter Media

► The core of every filtration is the filter element. By using the new filter media Synteq XP and an advanced manufacturing technology, the differential pressure is reduced significantly and up to 40 % additional energy savings can be achieved. These performance data is scientifically guaranteed according to ISO 12500-1. With Synteq XP Donaldson has developed a revolutionary filter media unlike anything else in the market.

The Particular of Synteq XP

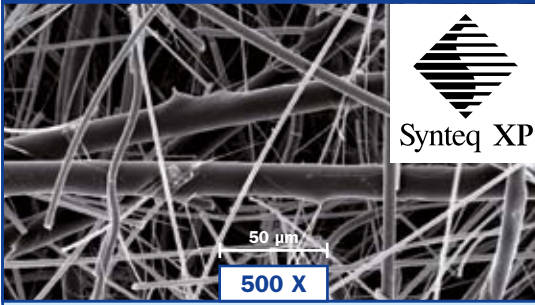
► For decades conventional filter media for the superior compressed air filtration are fabricated out of micro glass fibres by adding binder. The new high-performance filter media Synteq XP combines two innovations in one product: a unique fibre blend filtration media plus a new manufacturing technology without adding any binder. By using this technology stable polyester fibres and micro-fine borosilicate fibres are thermally melted together. The use of the polyester fibres establishes a stable framework, which sustainably supports the high filtration efficiency of the borosilicate fibres. Synteq XP is a revolutionary new media which provides highest filtration performance, exceptional dirt holding capacity and great stability.

Conventional Filter Media



- **Advantage:** High filtration efficiency
- **Disadvantage:** Increased differential pressure and lower dirt holding capacity due to reduced air pathways because of binder

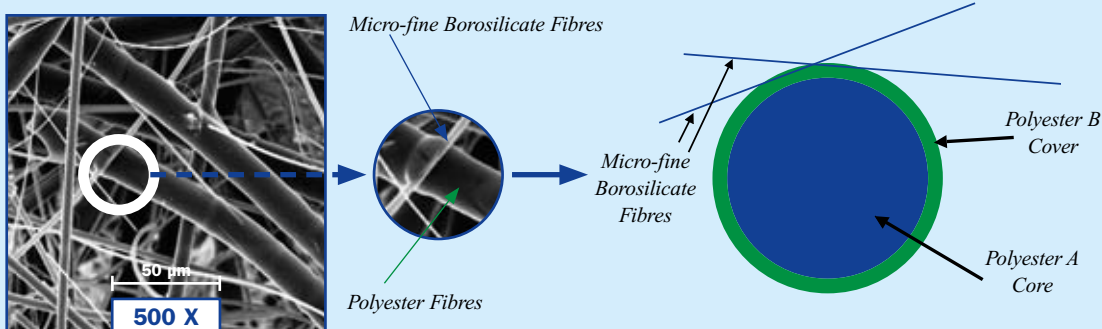
Synteq XP



Advantages:

- Very high filtration efficiency
- Very low differential pressure
- High dirt holding capacity
- Binder-free

Synteq XP Filter Media for Compressed Air Filters validated according to ISO 12500-1

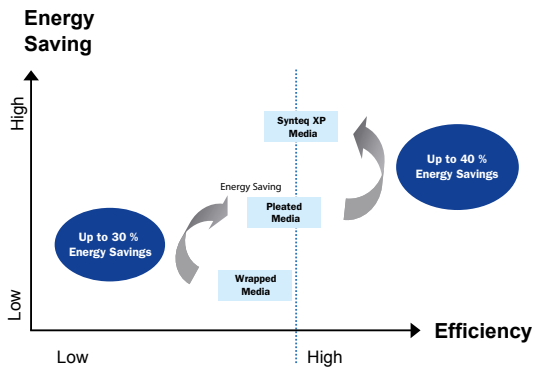


Energy Savings up to 40 %

Features and Advantages:

- ▶ **High performance.** The combination of different fibres and the extraordinary depth of the fibre-bed lead to a better filtration efficiency as well as a high dirt holding capacity.
- ▶ **Cost effective.** The very low differential pressure allows energy savings up to 40 % and therefore substantial cost reductions.
- ▶ **High stability.** The additional application of polyester fibres causes long-term high stability.
- ▶ **Binder-free.** The binder-free bonded fabric provides an open pore structure for improved filtration performance.

Synteq XP – Lower Pressure Drop saves Energy Costs

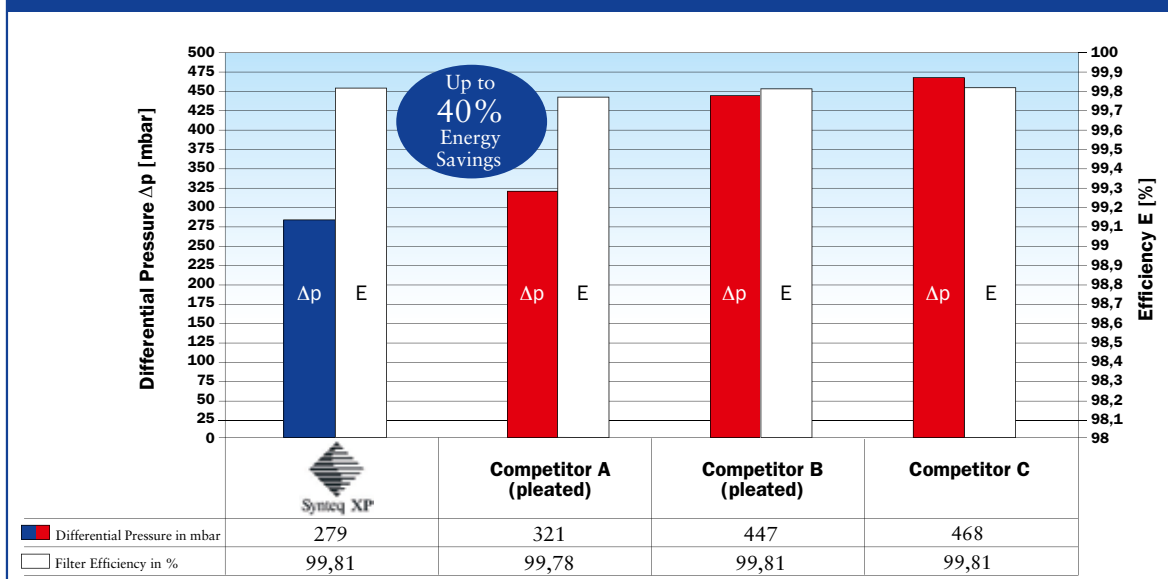


Synteq XP in Competitive Comparison

▶ The new Synteq XP filter media technology outperforms traditional filters by beating them with lower pressure drop. Especially under oil-moistured conditions Synteq XP stands out through lower

differential pressure and extensive energy savings. The performance of Donaldson Synteq XP filters for compressed air filtration is tested and validated according to the new international filter standard ISO 12500-1.

Benchmarking of Synteq XP



Differential pressure (Δp) and retention rate (efficiency) according to ISO 12500-1, comparable coalescence filter under oil-moistured conditions at 8 bar.

Donaldson. *And everything just got better.*

Total Filtration Management

▶ Donaldson offers a wide variety of solutions to reduce your energy costs, improve your productivity, guarantee production quality and help protect the environment.

Compressed Air Filtration, Sterile Filtration, Process Filtration, Refrigerant Drying, Adsorption Drying, Condensate Drains, Condensate Purification Systems, Air/Oil Separation, Dust and Fume Removal, Oil Mist Separation, Process Air and Gas Processing

Total Filtration Service

▶ A comprehensive range of services especially designed to keep your production at peak performance and at the lowest total cost of ownership.

Donaldson Europe B.V.B.A.

Research Park Building No. 1303 • Interleuvenlaan 1
B-3001 Leuven • Belgium

Phone +32 (0)16 38 38 11 • Fax +32 (0)16 40 00 77

CAP-europe@donaldson.com

www.donaldson.com



Donaldson.
Ultrafilter

Donaldson.
Torit® DCE®